



Revving Up for 50 Years of Racing in Long Beach



This April 12th, the streets of Long Beach will come alive once again with the roar of engines and the excitement of fans as the **Long Beach Grand Prix** celebrates its 50th anniversary.

What started back in 1975 as a Formula 5000 race has grown into one of the most iconic motorsports events in North America. Just a year after its debut, it became a Formula One event, drawing international attention and placing Long Beach on the global racing map. In 1984, the event shifted gears to IndyCar racing, where it has remained a fan favorite ever since.

Over the years, the Grand Prix has become much more than just a race. It's a full weekend experience with concerts, family fun, classic car shows, and a celebration of speed and innovation.

This year's milestone celebration will feature special tributes, historic car displays, appearances by legendary drivers, and a look back at five decades of unforgettable moments. It's a must-see event and a proud moment for the city of Long Beach.

Let's celebrate 50 years of high-octane excitement, community spirit, and racing history right in our own backyard.

Why Assess Company Culture Before Introducing New Furniture?

Understanding company culture is essential to choosing furniture that not only looks good but supports how people work and interact. Here's why it matters:

Cultural Fit

Furniture should reflect how a company operates. A collaborative culture may thrive with open seating and shared spaces, while a more traditional one might need private offices. Aligning the design with core values helps reinforce identity and foster a sense of belonging.

Employee Well-Being and Productivity

Furniture that supports daily habits—whether ergonomic desks for flexibility or formal setups for professionalism—can enhance comfort, focus, and job satisfaction. The right environment promotes healthier, more engaged employees.

Work Style Alignment

Flexible cultures may need modular furniture that adapts quickly, while more structured environments might favor uniform setups. Matching furniture to how work is done helps maintain flow and consistency.

Collaboration vs. Focus

Open layouts encourage communication and teamwork; enclosed workstations support privacy and deep focus. Choosing the right mix depends on whether the culture leans toward group work or individual tasks.

Employee Engagement and Buy-In

When new furniture feels like a natural fit, employees are more likely to embrace it. Including them in decisions or tailoring solutions to their needs increases satisfaction and smooths the transition.

Brand Identity

Office design speaks volumes. A creative firm might go bold and colorful; a corporate office might opt for clean, professional finishes. Furniture should echo the brand and leave a strong impression on clients and visitors.

Effective Communication

Layout influences how people connect. Cultures that thrive on collaboration need open, accessible spaces, while more focused environments benefit from defined, quiet zones.

Furniture should support the way people work. By starting with culture, companies can create spaces that feel authentic, functional, and inspiring, fueling productivity and a sense of purpose.

Celebrating
Earth Day: April 22nd
Arbor Day: April 25th



Upcoming Events for April

April 11 - 13 & 18 - 20
Coachella Music & Arts Festival
Empire Polo Club
Indio, CA

April 12
SDSU Pow Wow
Main Campus REC Field
San Diego, CA

April 12 - 27
Earth Day Events (various locations)
Beverly Hills, Claremont, Culver City,
Glendora, Huntington Beach, LA

April 13
Lakers vs. Trail Blazers
Crypto.com Arena
Los Angeles, CA

April 25 - 27
California Poppy Festival
AV Fair & Event Center
Lancaster, CA

April 19 - 20
Easter Egg Hunts (locations)
Anaheim, Dana Point, Del Mar,
Irvine, Ontario, Santa Ana, LA

**HAPPY
EASTER**



Sustainable Textiles in Furniture: Innovation Meets Impact



As sustainability takes the spotlight, the furniture world is stepping up. From how fabrics are sourced to how they're produced and reused, eco-conscious design is reshaping the industry.

Smarter Materials, Better Design
Think organic cotton, hemp, recycled

polyester, and wool. These materials are leading the charge. Plus, enzyme-based fabric processing is a game-changer—using less water and fewer chemicals while making textiles softer and more durable.

Learning from Fast Fashion
Fast fashion's "buy and toss" mindset has led to synthetic overuse and microplastic pollution—and it's starting to seep into furniture, too. But there's a better way.

Innovation That Lasts
Furniture brands are focusing on quality over quantity. Enzyme processing and other eco-

friendly techniques are reducing waste and extending the life of fabrics—so pieces don't just look good, they do good.

Consumers Driving Change
Shoppers are more eco-aware than ever, and they're choosing brands that align with their values. Long-lasting, sustainable textiles are becoming the new standard.

Looking Ahead
With ongoing innovation and a shift in consumer habits, the future of furniture is greener, smarter, and more responsible.

California Poppies Are Blooming! Here's Where to See Them

Each spring, California's hills come alive with the brilliant orange of California Poppies, the state flower and a true wildflower icon.

When to Go:
Bloom season starts in March, peaking from mid-April to early May. Visit on a sunny day—poppies close up when it's cloudy or dark!

Best Spots to See Them:
Antelope Valley Poppy Reserve (Lancaster): Endless orange fields and well-kept trails.

- Walker Canyon (Lake Elsinore): Famous for super blooms (check trail status).

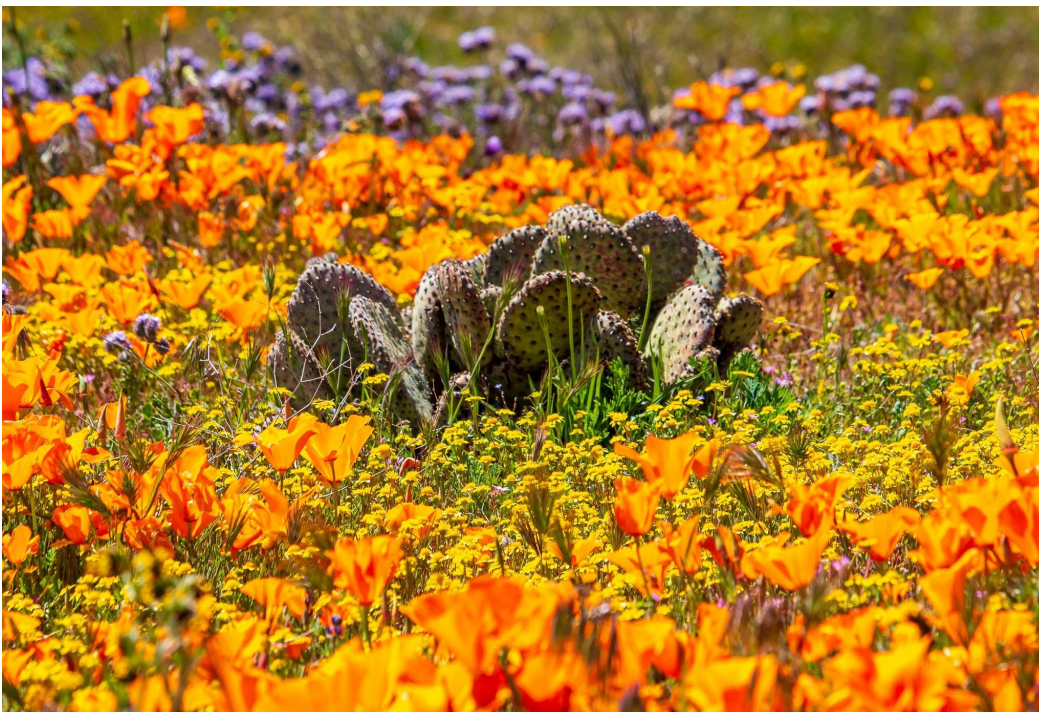
- Pinnacles National Park: Great hikes and golden views. Carrizo Plain (San Luis Obispo Co.): Remote, but jaw-dropping during blooms.

Look, Don't Pick:
Stay on trails, don't trample or pick the flowers—it's illegal in protected areas and harms future blooms.

Pro Tip:
Visit in the morning or early afternoon for full blooms. Want epic photos? Use a polarizing filter and shoot toward the sun for that golden glow.

Whether it's a super bloom or just a gentle pop of color, California poppies are a golden reminder that beauty thrives in wild places.

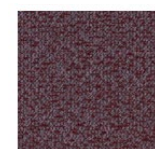
California Bloomscape: Poppies and Palettes



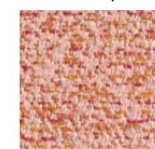
Teknion: Zingana



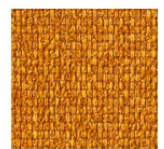
Luum: Ample - Charge



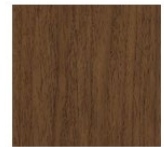
Luum: Haptic Geode



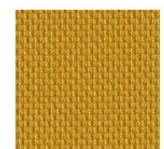
Luum: Unbound - Ceres



Momentum: Beta - Koi



Teknion: Essential Walnut



Maharam: Arlo - Warmer



Maharam: Bright Grid - Safety