



Chinatown Seafair Parade: A Colorful Celebration



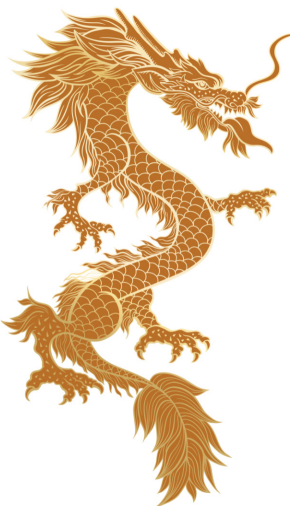
The Chinatown Seafair Parade (July 20) is more than a procession—it's a tribute to community, culture, and the spirit of summer.

Lion and dragon dances delight the crowd with majestic movements and rhythmic drums honoring Chinese heritage.

A show-stopping dragon and the Seattle Chinese Community Girls Drill Team—known for their vibrant formations and traditional opera costumes are sure to bring excitement to the procession.

Expect a lively mix of floats, martial arts, traditional Chinese music, and newer Asian cultural acts to fascinate everyone.

Promoting community spirit, local groups, families, and Seafair Pirates bring energy to this event, welcoming all ages with festive cheering and interactive charm. Arrive by 6pm to grab a good spot near Hing Hay Park along the parade route.



Picnic & Performance: Shakespeare in Seattle's Parks

July is **National Picnic Month**, and Seattle's parks are the perfect stage for a summer of Shakespeare. Grab a blanket, pack a picnic, and enjoy free outdoor theater under the stars!

At **GreenStage** (July 11 to August 16), there are two classics to enjoy: *Much Ado About Nothing* – A witty romantic comedy. The other is *Richard III* – A gripping tale of power and ambition.

Their **Backyard Bard** series also offers 45-minute versions of *A Midsummer Night's Dream* and *The Taming of the Shrew*—great for families. Visit www.greenstage.org for details.

Wooden O (July 10 to August 17)

Being performed at several parks around Seattle, Shakespeare's *As You Like It* – a delightful comedy of words and forests, will be performed at Volunteer Park, Columbia Park, and Luther Burbank Park. Visit Wooden O: www.acttheatre.org, for details.

Outdoor Theater Festival (July 12–13)

Catch multiple shows and workshops in one weekend at the Seattle Outdoor Theater Festival, at Volunteer Park.

Shakespeare in the Park is a summer must. No tickets needed—just locate a park, a performance time, show up and enjoy!



Cast of Backyard Bard, Photo: Ken Holmes

Upcoming Events for July



July is National Grilling Month

July 13
Silversun Pickups
Pier 62
Seattle, WA

July 15, 17, 18
Louis C.K. (Comedy)
Pantages Theatre
Tacoma, WA

July 17
Dwight Yoakam & Mavericks
Chateau Ste Michelle Winery
Woodinville, WA

July 19
Jerry Seinfeld
Paramount Theatre
Seattle, WA

July 19 - 20
Mariners vs. Astros
T-Mobile Park
Seattle, WA

July 19
Sounders FC vs. SJ Earthquakes
Lumen Field
Seattle, WA

July 21
Katy Perry
Climate Pledge Arena
Seattle, WA

July 25
Morgan Wallen, Miranda Lambert, Anne Wilson
Lumen Field
Seattle, WA

Note: Check Event locations for current information.




Recognizing National Disability Pride Month in July.



Game On: The Charm of Capital Hill's Pac-Man Park



Photo: Jeremy Gonzalez, SeattleMet.

 Tucked into a quirky triangle of pavement where Summit Avenue meets Olive Way and Denny Way, Pac-Man Park is one of Seattle's most playful public spaces. Located in Capitol Hill, this interactive art installation was born from community input in 2016 when the Seattle Department of Transportation invited residents to reimagine underused streets. Out of nine proposals, a full-scale Pac-Man maze captured the neighborhood's imagination and won the vote. The project was funded through the city's "Pavement to Parks" initiative, which allocated around \$70,000 to transform leftover bits of roadway into inviting mini-plazas.

Rather than simple paint, the design uses thermoplastic tiles melted onto the asphalt, offering greater durability and color retention. The result is a roughly 2,600-square-foot maze complete with Pac-Man himself, the four iconic ghosts, pellets, and directional arrows, all laid out for visitors to explore on foot. Scattered tables and chairs make it a cozy, if unconventional, spot for a coffee break, especially with local cafes and eateries nearby.



Quiet Space Inspiration



SitOnIt - Envoi Midback & Highback lounge chair | **Source International** - Mojo Light task chair | **OFS** - Hydra, Porter | **Ghent** - Geo Mobile glass board | **KFI** - Alden side table | **Arcadia** - Conduit meeting table | **Blu Dot** - Bub chandelier, Bobber floor lamp | **BuzziSpace** - BuzziSurf | **Hon** - Scramble coffee table, Astir lounge chair, Brigade bookcase | **Darran** - Abacus privacy screens.